

INK 100168



almedahls

INK 100168

INK is a printed sheer inspired by the foliage of chestnut trees on Djurgården, Stockholm. The design by Maria Löw balances between abstract and figurative, forming a soft and expressive surface.

Painted with liquid ink, the colours blend naturally into each other, creating calm transitions and a warm, visual depth. The delicate design and harmonious tones support a tranquil and inviting atmosphere. A versatile choice for public interiors.

PRODUCT INFORMATION

Design and Material

Design: Maria Löw
Material: 100% Polyester Trevira CS
Width: 140 cm (55.12 inch)
Weight: 140 g/m² (4,13 oz/yd²)

Number of colours: 8

Pattern Features

Repeat: 63 cm (24.8 inch)

Turnable design: Yes

Light Properties

Openness factor: 25%
Solar value average: Rs + As = 55
Light transmission: Transparent

PERFORMANCE

Colour Fastness

Light fastness: 5-6
(ISO 105-B02, scale 1-8)

Colour fastness to
laundering: 4-5
(ISO 105-C06, scale 1-5)

Acoustics

Sound class: E
SS-EN ISO 354

Alpha value: 0,15

Flame Retardant Standard

IMO 2010 FTP Code part 7
NT Fire 43 Class1



WASHING INSTRUCTIONS



Wash with similar colours
Can be washed at 70°C

Shrinkage: < 2%
SS-EN ISO 6330+A1

SUSTAINABILITY

OEKO-TEX® STANDARD 100
Five Zero Green
SS-EN ISO 14001:2004
REACH

OTHER INFO

The turnable pattern provides
possibility to create a valence



Ö 97-059
RISE



INK-100168-0051

almedahls

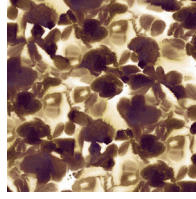
Colour



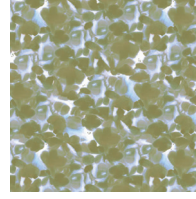
0085



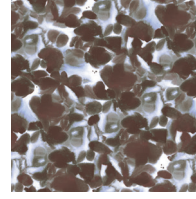
0051



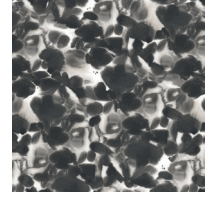
0046



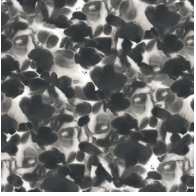
0034



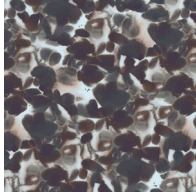
0063



0029



0095



0067