

## WILDFLOWER 101721



**almedahls**



# WILDFLOWER 101721

WILDFLOWER is an imaginative flower meadow that spreads freely across the width of the fabric. It is printed on our satin base fabric, a dense weave with a smooth surface and a subtle lustre. The close weave construction ensures glare control, and the fabric is tested for sound absorption, achieving class C, which is a good acoustic value. The carefully considered colour combinations are designed to easily coordinate with our wide selection of uni-coloured fabrics.

The hand-drawn, dynamic textures in the design, the class C sound absorption value, and the subtle lustre of the satin weave make WILDFLOWER a perfect choice for various settings.

## PRODUCT INFORMATION

### Design and Material

**Design:** Studio Almedahls  
Essy Winnerholt  
**Material:** 100% Trevira CS  
**Width:** 140 cm (55.12 inch)  
**Weight:** 190 g/m<sup>2</sup> (5,60 oz/yd<sup>2</sup>)  
**Number of colours:** 6

### Pattern Features

**Repeat:** 90 cm (35 inch)  
**Turnable design:** Yes

### Light Properties

**Openness factor:** 1%  
**Solar value average:** Rs + As = 70  
**Light transmission:** Translucent

## PERFORMANCE

### Colour Fastness

**Light fastness:** 4 - 5  
(ISO 105-B02, scale 1-8)

**Colour fastness to laundering:** 4 - 5  
(ISO 105-C06, scale 1-5)

### Acoustics

**Sound class:** C  
SS-EN ISO 354  
**Alpha value:** 0,6

### Flame Retardant Standard

IMO 2010 FTP Code part 7  
NT Fire 43 Class1



## WASHING INSTRUCTIONS



Wash with similar colours

Can be washed at 70°C

**Shrinkage:** < 2%  
SS-EN ISO 6330+A1

## SUSTAINABILITY

OEKO-TEX® STANDARD 100

Five Zero Green

SS-EN ISO 14001:2004

REACH



WILDFLOWER 101721-0045

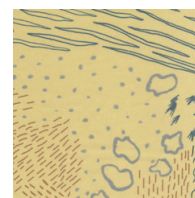
## Colour



0066



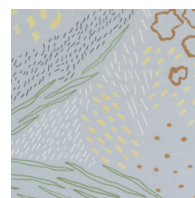
0013



0045



0063



0054



0023

**almedahls**